

The Dalles Dam Fishway Status Report

04/26/20

Inspection Period: 4/19-4/25, 2020

THE DALLES DAM



US Army Corps
of Engineers
Portland District

The Dalles Project-Fisheries
P.O. Box 564
The Dalles, OR 97058-9998
Phone: 541-506-3800

The Dalles Dam	Inspections OOC	Criteria Limit	Total Number of Inspections: 21	Temperature: #DIV/0! °F
			Comments: Increasing spill volume and GULL #.	Weekly Average Secchi: 4.9

NORTH FISHWAY

Exit differential	0	≤ 0.5'	
Count station differential	0	≤ 0.3'	
Weir crest depth	0	1.0' ± 0.1'	
Entrance differential	0	1.0' - 2.0'	Average for week = 1.3
Entrance weir N1	0	depth (≥ 8')	Average for week = 9.5
Entrance weir N2	0	Closed	
PUD Intake differential	0	≤ 0.5'	Differential problems likely related to FB index damage.

EAST FISHWAY

Exit differential	0	≤ 0.5'	
Removable weirs 154-157	0	Per forebay	
Weir 158-159 differential	17	1.1' ± 0.1'	Calibration error resulting in 0.1' off of criteria range. Maintenance notified.
Count station differential	0	≤ 0.3'	
153 Weir crest depth	0	1.1' ± 0.1'	
Junction pool weir JP6	0	≤ 7.0'	
East entrance differential	0	1.0' - 2.0'	Average for week = 1.5
Entrance weir E1	0	No criteria	Average for week = 71.9
Entrance weir E2	0	depth (≥ 8')	Average for week = 12.2
Entrance weir E3	0	depth (≥ 8')	Average for week = 12.2
Collection channel velocity	0	1.5 - 4 fps	2.79 fps Range: 3.31 fps MU6 - 2.39 fps MU9
Transportation channel velocity	0	1.5 - 4 fps	2.48 fps 4/24/2020
North channel velocity	0	1.5 - 4 fps	2.6 fps 4/25/2020
South channel velocity	0	1.5 - 4 fps	2.91 fps 4/25/2020
West entrance differential	0	1.0' - 2.0'	Average for week = 1.5
Entrance weir W1	0	depth (≥ 8')	Average for week = 11.1
Entrance weir W2	0	depth (≥ 8')	Average for week = 11.1
Entrance weir W3	0	No criteria	
South entrance differential	0	1.0' - 2.0'	Average for week = 1.5
Entrance weir S1	0	depth (≥ 8')	Average for week = 8.4
Entrance weir S2	0	depth (≥ 8')	Average for week = 8.5

JUVENILE PASSAGE

Sluiceway operation	0	Units 1, 7, 18	MU8 OOS, MU7 running per FPP.
Turbine trashrack drawdown	0	<1.5', biwkly	4/19/2020 checked
Spill volume/pattern	0	1 to 8	Spill 40% of total flow.
Turbine Unit Priority	0	per FPP	
Gatewells	0	Weekly	4/25/2020 no fish mortality.

OTHER ISSUES:

Fishway Operations

North and east fish ladders in full operation

Spillway closed

Sluiceway opened with open sluiceways 1-1,1-2,1-3,7-1,7-2,18-2.

Unit Outages

T10 (MU19 & 20) FOOS through 10/28/2021 due to acetylene levels

MU1 and MU2 restricted to 160 MW combined through 5/28/2020

MU8 OOS 1/21/2020 - 5/17/2020 for Overhaul.

Maintenance

Calibration check 4/25/20; E1, out of calibration, but not criteria concern. East exit weir 158 OOCalibration, setpoint moved to 1.4' differential to compensate until repaired.

Five of 6 east fishway collection channel dewatering pumps removed for repair/rehab. Awaiting new pump motors for installation.

East fishway automation replacement resumed. Staff brought in for PLC box assembly while maintaining workplace COVID guidelines.

Spillway assessment (MRER); No funding for FY20. Spillgate 9 fish priority included.

Staff gage loose from wall at south entrance channel. Steel plate of gage sticking out into flow, causing potential for fish injury. Maintenance will remove via crane.

Onsite staffing reduction due to COVID. Making adjustments to accomplish as much workload as possible.

Predators

Green laser use for piscivorous bird hazing testing on hold. Laser Safety Officer training in progress to assure meeting all safety guidelines.

USDA hazing resumed 4/15/20. Gulls actively foraging below spillway. Gulls inside lines are being aggressively hazed by USDA.

No sea lion observations this week. Operations implemented additional navlock operation guidelines in efforts to prevent sealions upstream passage.

Research/Construction/Contractors

Four Peaks fish counting ongoing.

AWS backup - Ready for operation if needed.

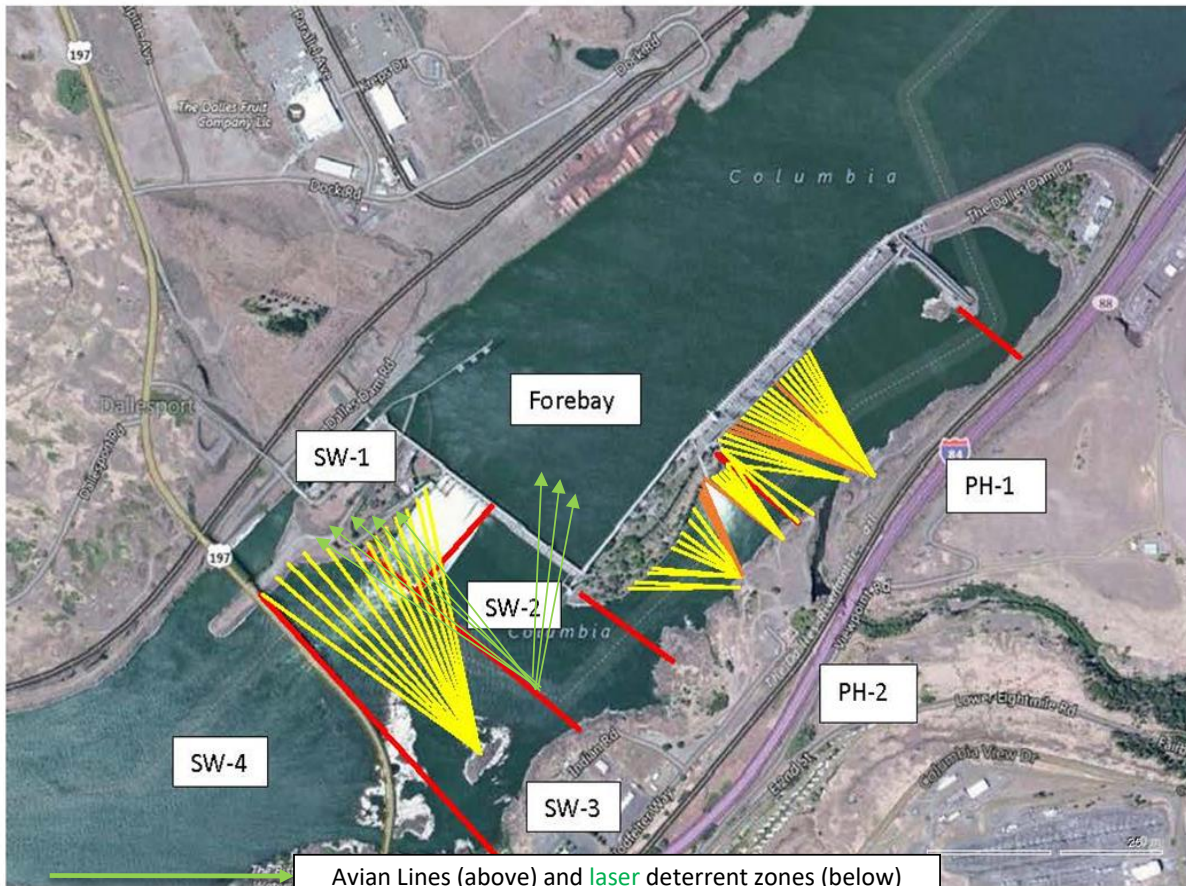
PITAGS north and east fishladder data collection at count stations continues.

Dam angling resumes in May. **Bass/Walleye release due to state classification of game species.**

Fish unit breaker replace.- Completed.

Fish unit rehab - Phase 1A. Planning operation scenario with AWS backup water supply during construction. No funding.

Approved by: Mike Colesar, Operation Project Manager, The Dalles Dam

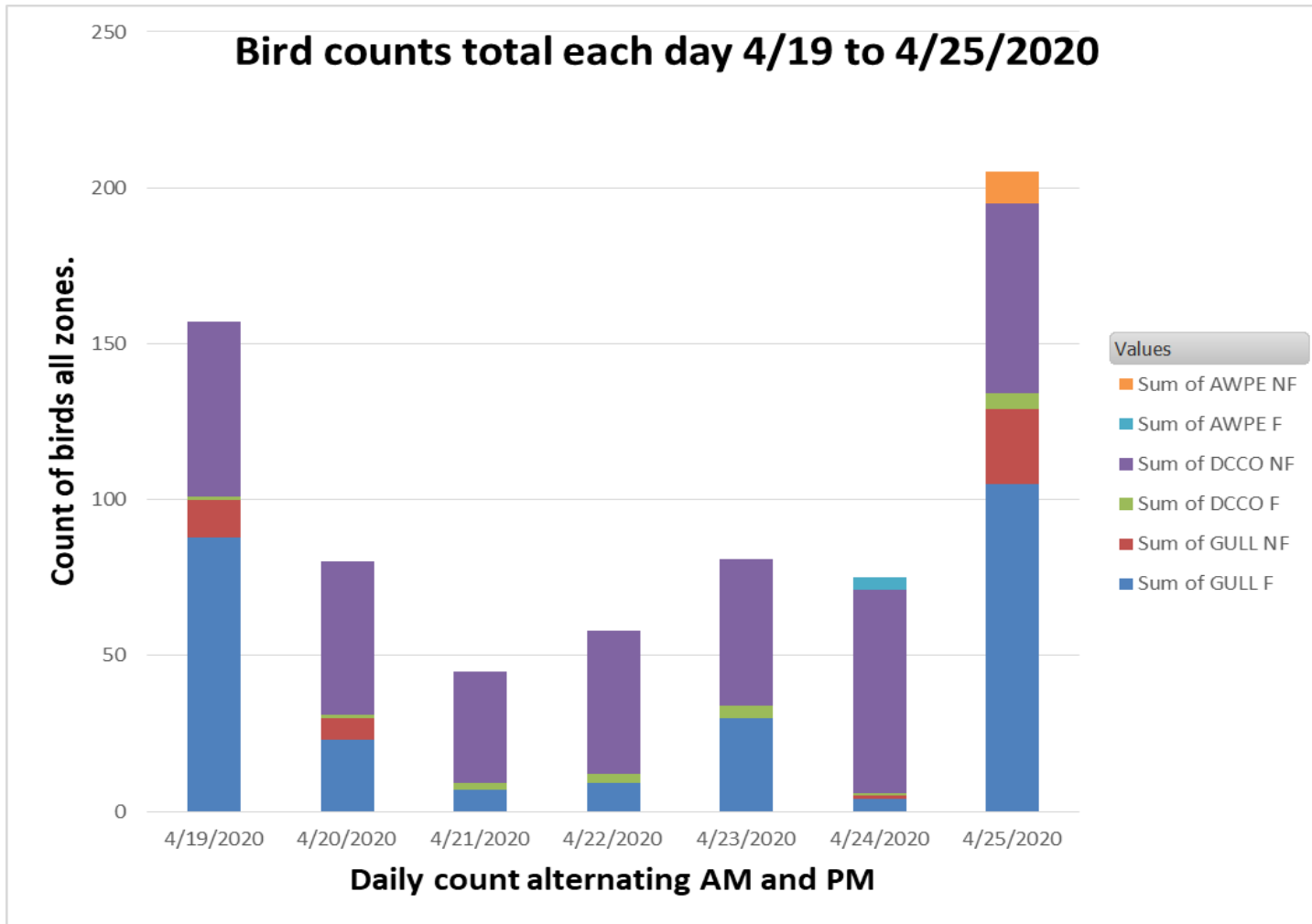


Red lines = avian zones

Avian Lines (above) and laser deterrent zones (below)

Yellow lines = current wires

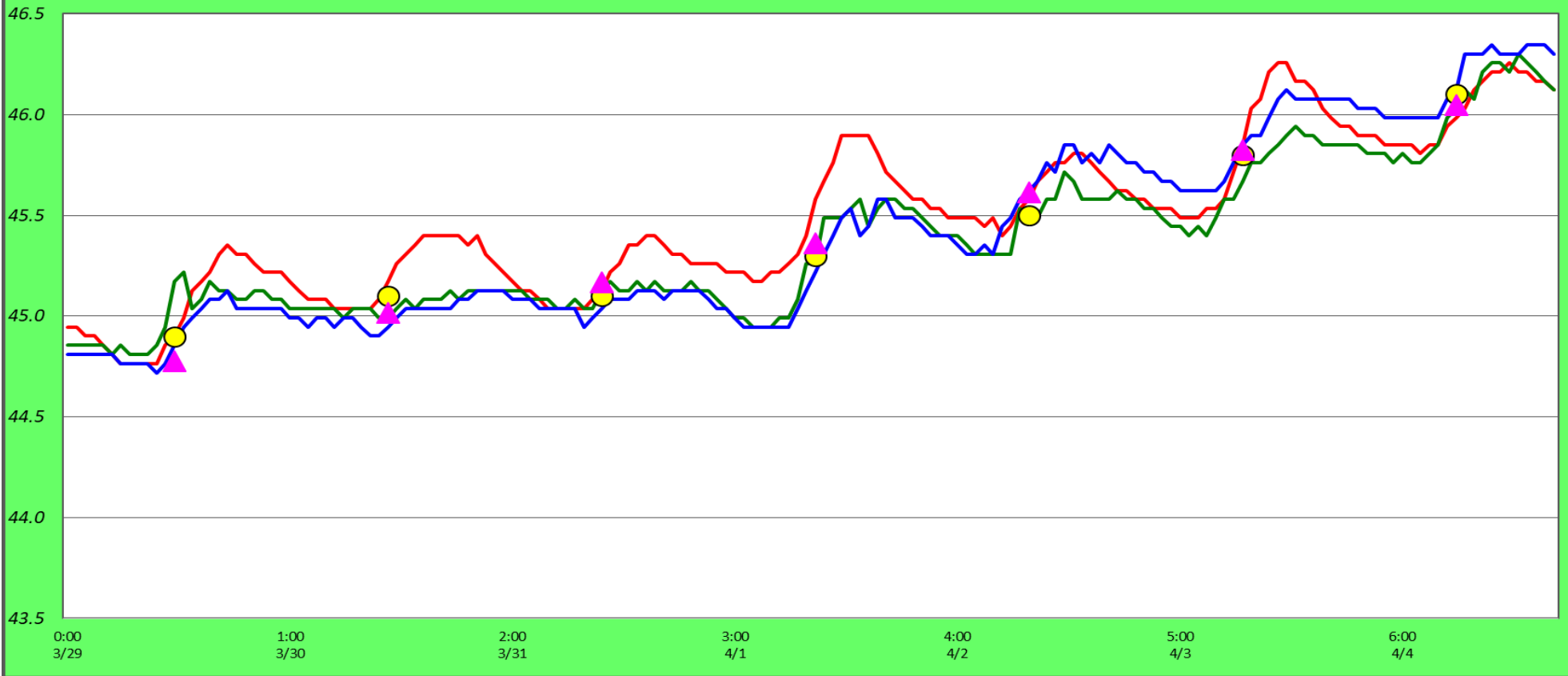
Orange lines = down or missing wires



GULL = gull
 AWPE = American white pelican
 20 + DCCO present on nests at this time!

Adult Fish Ladder(s) - River Temperatures

— East Count Station — North Count Station — North Entrance ● Current USGS Daily Average ▲ USGS Daily Average (2007-2019)



	Secchi:		USGS: °F
4/19	5.0	Sun	
4/20	4.5	Mon	
4/21	5.0	Tue	
4/22	5.0	Wed	
4/23	5.0	Thurs	
4/24	5.0	Fri	
4/25	5.0	Sat	
	4.9	AVG	#DIV/0!

[March Temps](#)

The Dalles Dam Daily Readings and Averages for
Temperatures, Secchi, Entrances, and Spill

SCADA INSPECTION
out of criteria

Date:	North Ladder		East Ladder										South Entrance		
	Differential	N1 Depth	East Entrance					West Entrance			W3	Differential	S1	S2	
			Differential	E1 Depth	E2 Depth	E3 Depth	JP 6	Differential	W1	W2					
4/19			1.4	71.6	12.0	12.0	11.1	1.5	11.0	11.0	Closed	1.5	8.3	8.2	
	1.3	9.4	1.6	71.6	11.9	11.9	11.0	1.4	10.9	10.9		1.5	8.3	8.3	
	1.3	9.4	1.4	71.4	12.1	12.0	10.8	1.3	10.9	10.9		1.5	8.3	8.2	
4/20			1.4	71.3	12.0	12.0	10.3	1.4	10.8	10.8		1.5	8.2	8.2	
	1.3	9.4	1.5	71.4	12.0	12.0	10.3	1.4	10.8	10.8		1.5	8.3	8.3	
	1.2	9.4	1.5	71.4	12.0	12.0	10.3	1.3	11.0	11.0		1.4	8.4	8.4	
4/21			1.6	72.7	12.0	12.0	11.7	1.6	10.9	10.9		1.5	8.4	8.4	
	1.3	9.4	1.6	71.7	12.0	12.0	11.8	1.7	10.7	10.7		1.5	8.3	8.3	
	1.4	9.4	1.6	72.1	12.0	12.0	12.0	1.7	10.9	10.9		1.5	8.3	8.3	
4/22			1.5	71.5	12.0	12.0	11.5	1.7	10.8	10.8		1.5	8.3	8.3	
	1.3	9.5	1.6	71.5	11.9	11.9	11.4	1.5	10.9	10.9		1.5	8.3	8.3	
	1.3	9.5	1.6	71.4	12.1	12.1	11.4	1.6	10.9	10.9		1.5	8.4	8.4	
4/23			1.6	72.3	12.2	12.2	12.4	1.7	10.7	10.8		1.5	8.5	8.4	
	1.3	9.6	1.4	72.4	12.5	12.6	12.4	1.5	11.4	11.4		1.5	8.4	8.7	
	1.3	9.6	1.5	71.9	12.4	12.5	12.5	1.6	11.5	11.5		1.5	8.5	8.8	
4/24			1.5	72.1	12.5	12.5	12.5	1.5	11.5	11.5	1.5	8.6	8.8		
	1.3	9.6	1.5	72.4	12.6	12.6	12.9	1.6	11.5	11.5	1.5	8.7	8.9		
	1.3	9.6	1.5	72.4	12.6	12.6	12.9	1.6	11.4	11.4	1.6	8.4	8.6		
4/25			1.5	72.2	12.5	12.5	12.7	1.5	11.5	11.5	1.6	8.7	8.6		
	1.3	9.6	1.6	72.0	12.5	12.5	12.5	1.6	11.4	11.4	1.5	8.7	8.6		
	1.3	9.5	1.5	72.2	12.5	12.5	12.5	1.5	11.4	11.4	1.5	8.7	8.6		
AVG:	1.3	9.5	1.5	71.9	12.2	12.2	11.8	1.5	11.1	11.1	1.5	8.4	8.5		

Fishways are inspected once daily plus one SCADA inspection.



Maintenance setting up to remove loose staff gage sticking out in flow